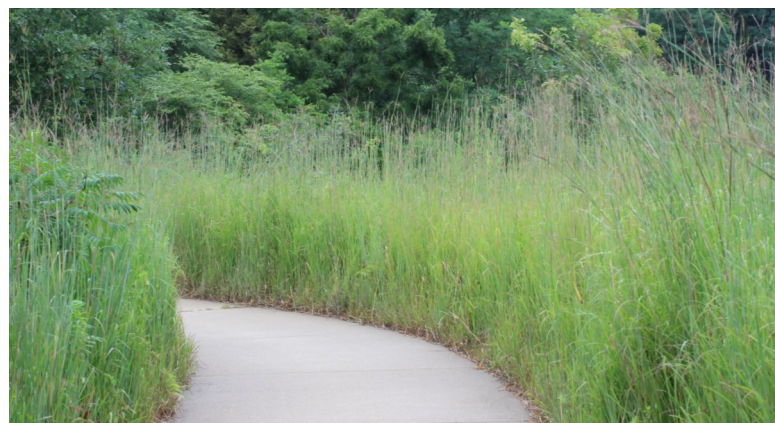


# Native Prairiegrass Mixture



## Description

**Native Prairiegrass Mixture** is made up of the 5 native warm season grasses and 3 native cool season grasses that inhabited our area when originally settled by the early pioneers. This mixture provides an excellent seeding combination for all types of areas and soil types. Native Prairiegrass Mixture provides food and shelter for wildlife, controls surface erosion and chokes out weeds. This mixture requires 2-3 years for full maturity. Once established it is relatively low maintenance and drought tolerant due to extensive and deep root systems/ Mature height of all species range from 3 to 7 feet .

Scientific Name	Common Name	% of Mix (PLS LBS)
<i>Andropogon gerardii</i>	Big Bluestem	15%
<i>Avena sativa</i>	Seed Oats	50%
<i>Bouteloua curtipendula</i>	Sideoats Grama	3%
<i>Elymus virginicus</i>	Virginia Wildrye	3%
<i>Panicum virgatum</i>	Switchgrass	3%
<i>Pascopyrum smithii</i>	Western Wheatgrass	6%
<i>Schizachyrium scoparium</i>	Little Bluestem	9%
<i>Sorghastrum nutans</i>	Indiangrass	8%

## Main Uses:

Conservation Areas, Perimeter Areas, Acerages, Parks

## Seeding Rate:

Drill Seeded– 25 LBS PER ACRE

Broadcast Seeded– 37.50 LBS PER ACRE

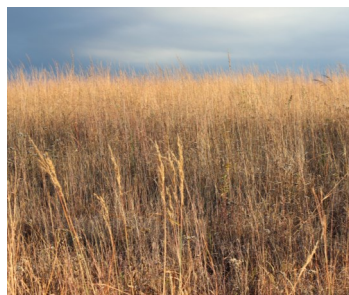
## Seeding Dates:

March–June

November-February (dormant seeding)

## Days to Germinate:

4-28 Days as a Mixture



OMAHA HEADQUARTERS\_ 7500 BURLINGTON \_ OMAHA, NE 68127  
 NE TOLL FREE (800)456-9901 \_ NE LOCAL (402)-331-4800 \_ NE FAX (402)-331-1251  
 DES MOINES WAREHOUSE \_ 1800 DIXON AVE \_ DES MOINES, IA 50316  
 IA TOLL FREE (800)-365-6674 \_ IA LOCAL (515)-282-1750 \_ IA FAX (515)-266-5587  
[www.unitedseeds.com](http://www.unitedseeds.com) [www.unitedseedsonline.com](http://www.unitedseedsonline.com)

# General Seeding Guidelines



## I. SEEDING DATES

April 15 to June 15

August 10 to October 15

November 15 to February 15

## II. SITE PREPARATION FOR BAREGROUND SEEDING

- i. Conduct a soil test, per acre, to determine any needed soil amendments
- ii. Check soil PH. Ideal PH is between 6.0 and 7.0
- iii. Eliminate existing vegetation
- iv. Spray with a non-selective herbicide
- v. Remove any dead vegetation
- vi. Add soil amendments. Adjust PH.
- vii. Till soil to a 4-6 inch depth
- viii. Remove any large debris
- ix. Pulverize and lightly roll soil
- x. Apply 1 lb of Phosphorous (P) (2.27 lbs P<sub>2</sub>O<sub>5</sub>) / 1000 ft<sup>2</sup> to soil surface

## III. SITE PREPARATION FOR INTERSEEDING/OVERSEEDING

- i. Conduct one soil test, per acre, to determine any need soil amendments
- ii. Check soil PH. Ideal PH is between 6.0 and 7.0
- iii. Remove any debris that may inhibit seeding
- iv. Mow area to be seeded if existing vegetation is higher than 3-4 inches

## IV. SEEDING METHODS

Seeding Method is base on the slope and soil at site. Use broadcast, drop, slit or drill seeding methods where erosion is not a concern.

- i. Seed should be planted .125 to .25 inches below soil surface
- ii. Plant two directions putting 1/2 of seed down each direction
- iii. Gently roll or rake seeded area to ensure good soil to seed contact
- iii. If inter-seeding into existing vegetation use a slicer/inter-seeder that cuts into existing vegetation and places the seed into the soil at an optimum depth of 1/4 to 1/2 inch and achieves good soil to seed contact
- iv. If broadcast seeding into existing vegetation drag a harrow or chain link fence over seeded area to ensure seed to soil contact.

Hydro seed steep slopes or areas where erosion is a concern..

- i. Broadcast 1/2 of the seed before hydro-seed mixture is applied
- ii. Place the other 1/2 in the hydro seed mixture

## V. WATERING REQUIREMENTS

- i. Water to field capacity immediately after seeding
- ii. The first three weeks after seeding keep top 1.t inches of soil moist
- iii. Weeks four through six after seeding water 3-4 times per week
- iv. After six weeks water when grass begins to show drought stress

## VI. FERTILIZATION AND MOWING

- i. Fertilize seeded area once for the first two months with .5 lbs of N / 1000ft<sup>2</sup> after seeding
- ii. Mow when the grass is one inch longer than desired height. Do not remove more than 1/3 of grass blade.